

ACDEU



Priming Assisted Centrifugal Pump w/Autostart Model PA4A60-4024T Size 4" x 4"



Total Head		Capacity of Pump in U.S. Gallons per Minute (GPM) at Continuous Performance			
P.S.I.	Feet				
52.9	122	180	180	180	180
52.0	120	220	220	220	220
47.7	110	419	475	475	475
43.4	100	420	565	670	715
39.0	90	425	573	690	805
34.7	80	430	580	705	820
30.3	70	435	585	710	830
26.0	60	439	590	715	835
Suction Lift		25'	20'	15'	10'



SHOWN WITH OPTIONAL WHEEL KIT

PUMP SPECIFICATIONS

- Size:** 4" x 4" (102 mm x 102 mm) Flanged.
- Casing:** Gray Iron 30. Maximum Operating Pressure 87 psi (600 kPa).*
- Semi-Open Type, Two Vane Impeller:** Ductile Iron 65-45-12.
Handles 3" (76,2 mm) Diameter Spherical Solids.
- Impeller Shaft:** Stainless Steel 17-4
- Replaceable Wear Plate:** Carbon Steel 1015.
- Intermediate Bracket:** Gray Iron 30.
- Seal Plate:** Gray Iron 30.
- Seal:** Mechanical, Oil-Lubricated, Double Floating, Self-Aligning. Silicon Carbide Rotating and Stationary Faces. Stainless Steel 316 Stationary Seat. Fluorocarbon Elastomers (DuPont Viton® or Equivalent). Stainless Steel 18-8 Cage and Spring. Maximum Temperature of Liquid Pumped 160°F (71°C).*
- Shaft Sleeve:** Alloy Steel 4130.
- Priming Chamber:** Gray Iron 30.
- Discharge Check Valve:** Ductile Iron and Buna-N.
- Radial Bearing:** Open Single Row Ball.
- Thrust Bearing:** Open Double Row Ball.
- Bearing and Seal Cavity Lubrication:** SAE 30 Non-Detergent Oil.
- Flanges:** Gray Iron 30.
- Gaskets:** Buna-N, Cork, and Vegetable Fibers.
- O-Rings:** Fluorocarbon Elastomers (DuPont Viton® or Equivalent).
- Hardware:** Standard Plated Steel.
- Bearing and Seal Cavity Oil Level Sight Gauges.**

*Consult Factory for Applications Exceeding Maximum Pressure and/or Temperature Indicated.

Standard Equipment: Gear-Driven Air Compressor. Hoisting Bail. Combination Skid Base w/Fuel Tank. Strainer. Single Ball Type Float Switch**.

**50 Ft. (15 m) Standard Length; Dual Switches and Alternate Cable Lengths Available From the Factory.

Optional Equipment: Battery. High Speed (55 MPH/89 KM/H) Single Axle Pneumatic-Tired Wheel Kit w/wo DOT-Approved Lights and Electric Brakes. Tandem Axle Over-the-Road Trailer (Meets DOT Requirements) Available w/Either Electric or Hydraulic Surge Brakes, Running Lights, Jack Stands and Safety Cables. EPS w/Submersible Transducer Liquid Level Sensor (50 Ft. [15 M] Cable Standard, Alternate Lengths Available).

WARNING!

Do not use in explosive atmosphere or for pumping volatile flammable liquids.

ENGINE SPECIFICATIONS

- Model:** John Deere 4024T.
- Type:** Four Cylinder, Four Cycle, Turbocharged, Liquid Cooled Diesel Engine.
- Displacement:** 149 Cu. In. (2,4 Liters).
- Governor:** Mechanical.
- Lubrication:** Forced Circulation.
- Air Cleaner:** Dry Type.
- Oil Reservoir:** 8.5 U.S. Qts. (8 Liters) Dry; 7.6 U.S. Qts. (7.2 Liters) Refill.
- Fuel Tank:** 61 U.S. Gallons (231 Liters).
- Full Load Operating Time:** 30.3 Hours.
- Starter:** 12 Volt Electric.

Standard Features: Low Oil Pressure and High Coolant Temperature Safety Shut Down Switches. Autostart Instrument Panel Includes: Tachometer, Voltmeter, Hourmeter, Coolant Temperature Gauge, Oil Pressure Gauge, Manual/Stop/Auto Key Switch, 10 Amp Pushbutton Circuit Breaker, Startup Warning Delay. Muffler w/Weather Cap. Throttle Control.

JOHN DEERE PUBLISHED PERFORMANCE:
Maximum Gross Continuous BHP
41 (30.8 kW) @ 2800 RPM



THE GORMAN-RUPP COMPANY • MANSFIELD, OHIO

GORMAN-RUPP OF CANADA LIMITED • ST. THOMAS, ONTARIO, CANADA

www.grpumps.com

Specifications Subject to Change Without Notice

Printed in U.S.A.

Specification Data

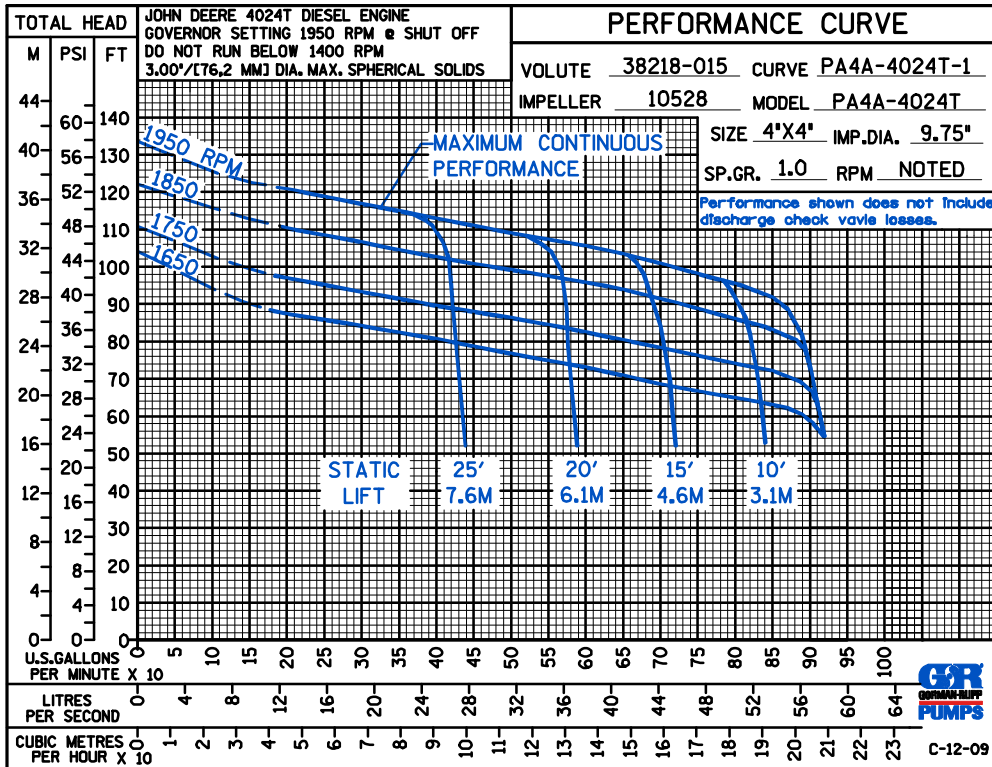
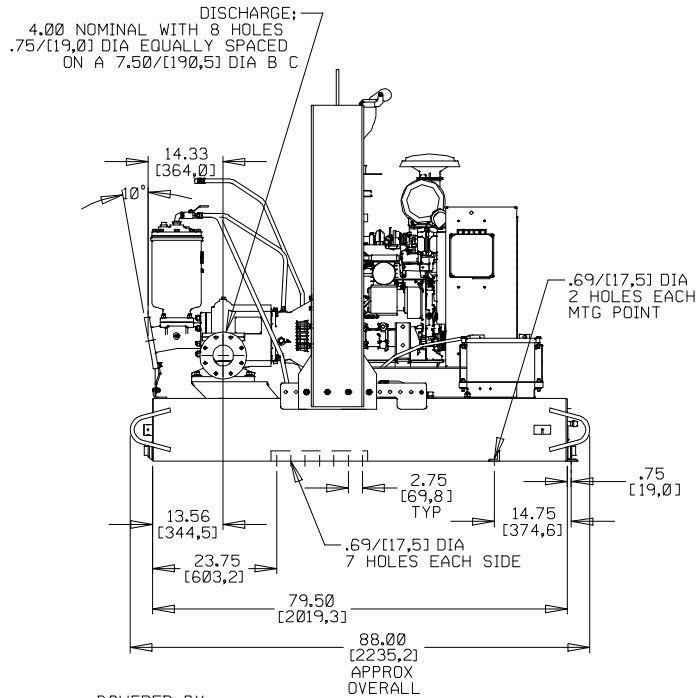
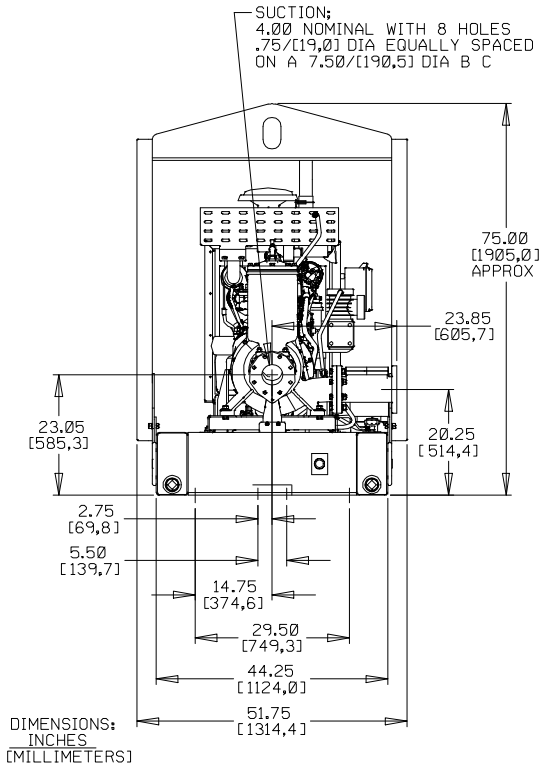
APPROXIMATE
DIMENSIONS and WEIGHTS

SKID BASE

2-WHEEL

NET WEIGHT: 2615 LBS. (1186.1 KG.) 3465 LBS. (1571,7 K.G.)
SHIPPING WEIGHT: 2890 LBS. (1310,8 KG.) 3465 LBS. (1571,7 K.G.)
EXPORT CRATE SIZE: 234 CU. FT. (6,6 CU. M.)

SECTION 42, PAGE 215



THE GORMAN-RUPP COMPANY • MANSFIELD, OHIO

GORMAN-RUPP OF CANADA LIMITED • ST. THOMAS, ONTARIO, CANADA

Specifications Subject to Change Without Notice

Printed in U.S.A.