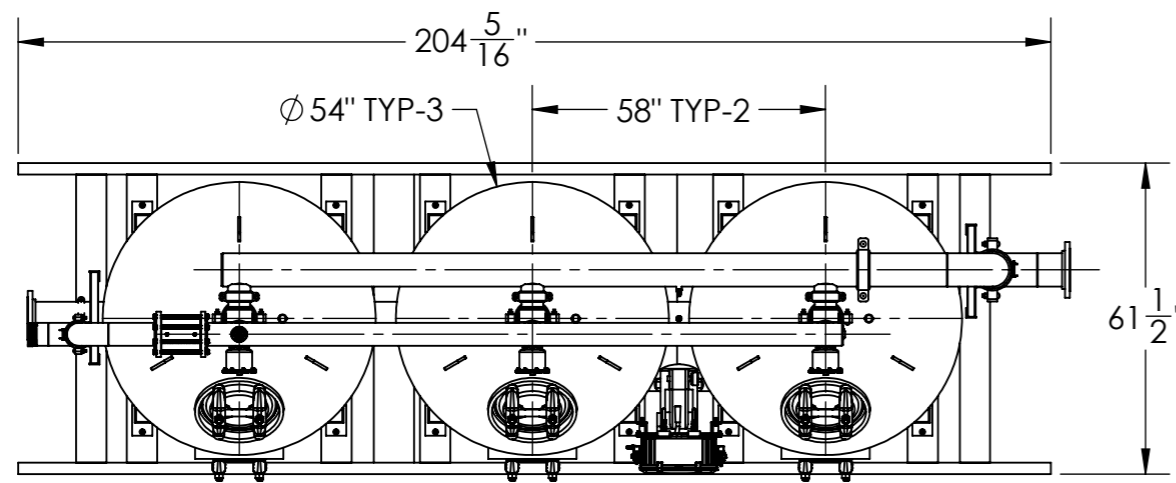


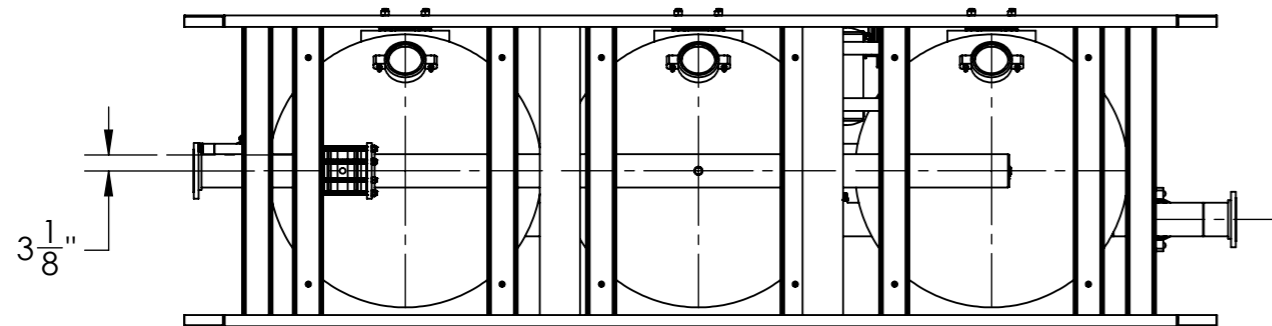
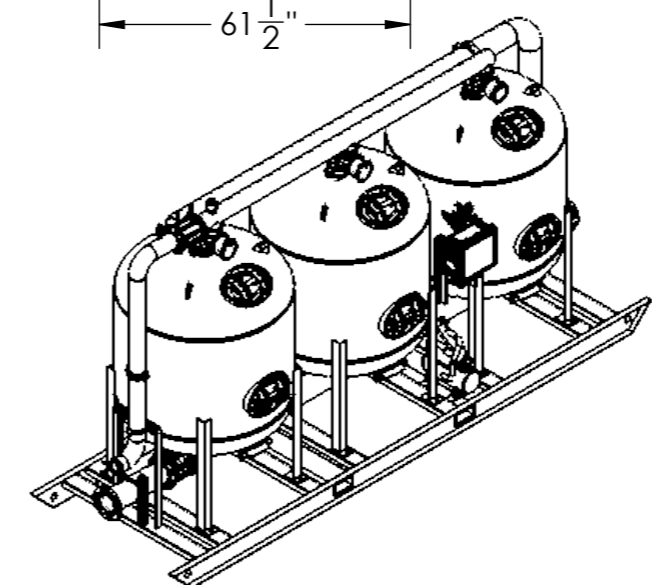
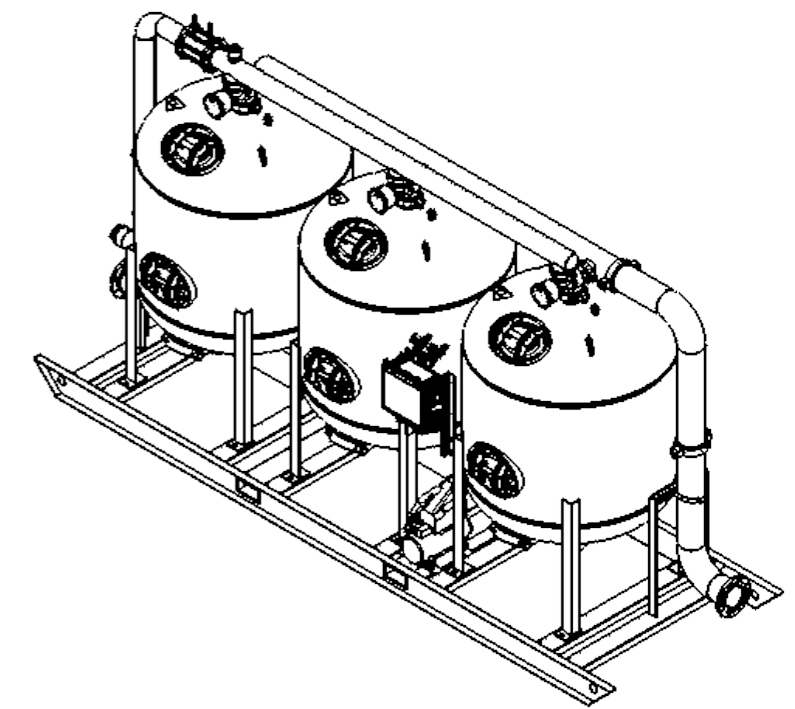
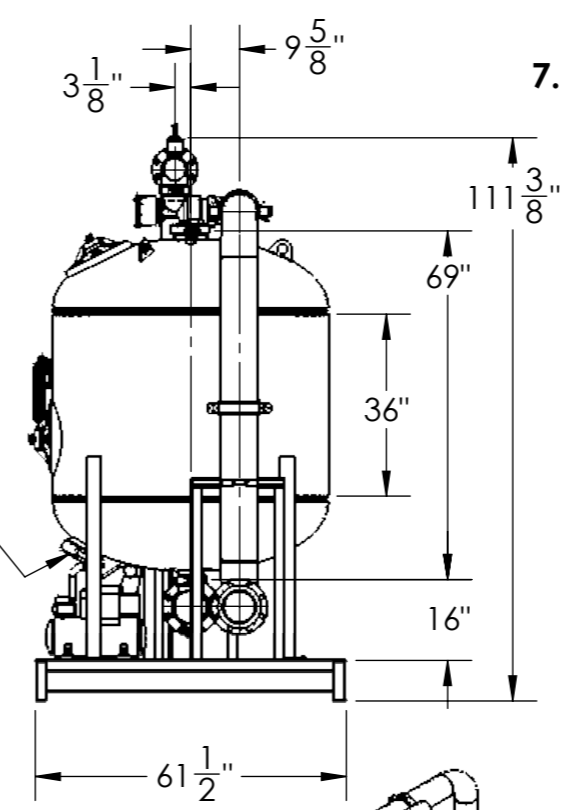
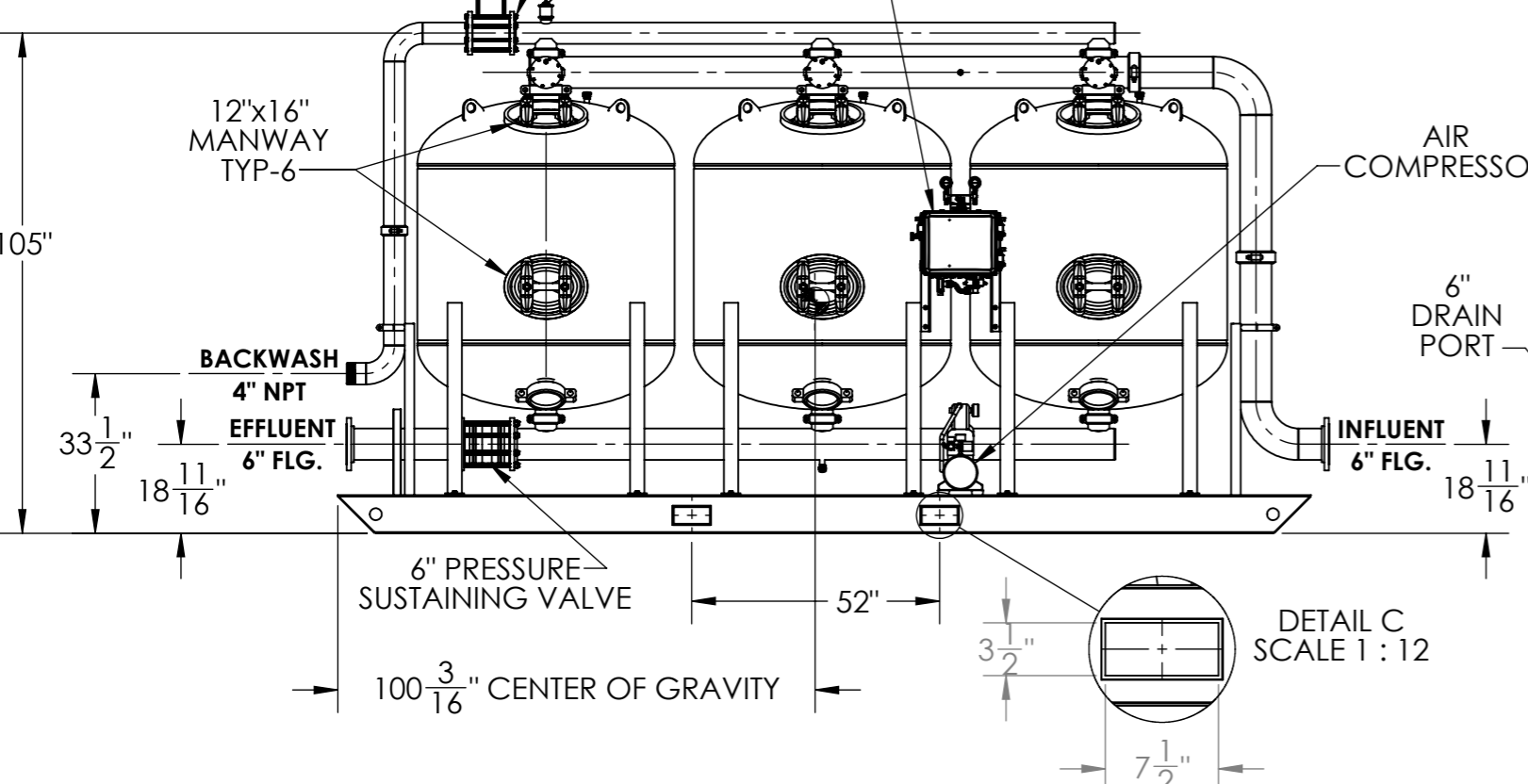
IL 5436-3AS FISCHER-ROBERTSON

NOTES:

1. FLOW RATE DESIGN: 477-715 GPM.
BACKWASH RATE: 15 GPM/FT², 240 GPM.
2. MAXIMUM OPERATING PRESSURE: 125 PSI.
3. ELECTRICAL REQUIREMENTS:
CONTROLLER 120V;
SOLENOIDS 24VAC; FACTORY WIRED
4. AIR SUPPLY REQUIRED: 2 CFM @ 70 PSIG (MINIMUM)
5. MEDIA REQUIREMENT PER TANK: **BY OTHERS**
A.) 1/2"x3/4" CRUSHED ROCK 13.0 CU. FT.
B.) 0.47mm CRUSHED SILICA SAND 38.5 CU. FT.
6. WEIGHT: (APPROX.):
EQUIPMENT: 5,525 LBS (LESS MEDIA)
MEDIA: 15,700 LBS
OPERATION: TBD LBS
7. **EXTERIOR PAINT COLOR: BLUE METAL #H302R1-6134.**



FLOW CONTROL VALVE (FACTORY SET TO 240 GPM)
SIGHT GLASS
YARDNEY SYNERGY CONTROLLER NEMA 4x ENCLOSURE



THIS DRAWING, INCLUDING THE INFORMATION IT CONTAINS, IS CONFIDENTIAL, PROPRIETARY AND IS THE PROPERTY OF YARDNEY WATER MANAGEMENT, INC. IT IS SUBMITTED ONLY IN CONNECTION WITH THE TRANSACTION TO WHICH IT PERTAINS AND MUST NOT BE USED IN ANY OTHER MANNER DETRIMENTAL TO THE INTERESTS OF YARDNEY WATER MANAGEMENT. THE DRAWING IS NOT TO BE COPIED AND MUST BE RETURNED UPON REQUEST.

IL 5436-3AS w/AIR COMPRESSOR & FORK POCKETS

REV	DESCRIPTION	BY	DATE
B	UPDATED PAINT COLOR.	AH	12/7/2022
A	CHANGED SKID TO ADD FORK POCKETS. ADDED RISER PIPES FOR INLET & BACKWASH.	DH	9/23/2022
REVISIONS			

DRAWING NUMBER: 9750001196	REV: B
DRAWN BY: DH	DWG. DIR. Z:\CUSTOMER\FISCHER-ROBERTSON\103135 IL 5436-3AS NO MEDIA\
DRAWN DATE: 9/21/22	SHEET: 1 OF 1
	SCALE: 1:38