

Priming Assisted Centrifugal Pump

w/Autostart

X887-100

Model PAH16A60-B-6090H FT4-ESP

Size 18" x 16"



Total Head		Capacity of Pump in U.S. Gallons per Minute (GPM) at Continuous Performance			
P.S.I.	Feet				
52.0	120	3000	3000	3000	3000
43.4	100	5800	7900	8800	8800
34.7	80	6000	8000	11800	12200
26.0	60	6100	8000	12200	13800
17.3	40	6300	8100	12200	14000
8.7	20	6500	8200	12350	14000
<b>Suction Lift</b>		<b>25'</b>	<b>20'</b>	<b>15'</b>	<b>10'</b>

PHOTO NOT AVAILABLE AT TIME OF PUBLISHING

**PUMP SPECIFICATIONS**

**Size:** 18" x 16" (457 mm x 406 mm) Flanged.  
**Casing:** Ductile Iron 65-45-12.  
 Maximum Operating Pressure 105 psi (724 kPa).\*  
**Enclosed Type, Four Vane Impeller:** Ductile Iron 80-55-06.  
 Handles 4" (101,6 mm) Diameter Spherical Solids.  
**Impeller Shaft:** Alloy Steel 4150M.  
**Replaceable Wear Ring:** Ductile Iron 65-45-12.  
**Bearing Pedestal:** Gray Iron 30.  
**Seal Plate:** Ductile Iron 65-45-12.  
**Seal:** Mechanical, SAE 30 Non-Detergent Oil-Lubricated. Silicon Carbide Rotating Face and Stationary Seat. Fluorocarbon Elastomers (DuPont Viton® or Equivalent). Stainless Steel 316 Cage and Stainless Steel 18-8 Spring. Maximum Temperature of Liquid Pumped 160 F (71 C).\*  
**Shaft Sleeve:** Stainless Steel 303/304.  
**Priming Chamber:** Gray Iron 30 Housing w/Stainless Steel Float and Linkage.  
**Discharge Check Valve:** Ductile Iron Housing w/Buna-N Flapper.  
**Radial Bearing:** Open Single Row Straight Roller.  
**Radial/Thrust Bearing:** Open Double Row Tapered Roller.  
**Bearing Cavity Lubrication:** Lithium EP2 Grease.  
**Suction Spool:** Gray Iron 30.  
**Gaskets:** Resistant Synthetic Rubber, Vegetable Fiber w/Compressed Synthetic Fibers.  
**O-Rings:** Buna-N. Fluorocarbon Elastomers (DuPont Viton® or Equivalent).  
**Hardware:** Standard Plated Steel.  
**Seal Cavity Oil Level Sight Gauges.**  
*\*Consult Factory for Applications Exceeding Maximum Pressure and/or Temperature Indicated.*  
**Standard Equipment:** Gear Driven Air Compressor. 2.5:1 Gear Reducer. Hoisting Bail. Unit Enclosure, Combination Skid Base w/Fuel Tank. [Single Ball Type Float Switch](#). [Full Feature Control Panel](#) \*\*  
**Optional Equipment:** Battery. Suction Vacuum and Discharge Pressure Gauge Kit. Liquid Level Transducer  
*\*\*50 Ft. (15 m) Standard Length; Dual Switches and Alternate Cable Lengths Available From the Factory.*

**WARNING!**

Do not use in explosive atmosphere or for pumping volatile flammable liquids.

**ENGINE SPECIFICATIONS**

**Model:** John Deere 6090HFC09.  
**EPA Tier:** Final Tier 4.  
**Type:** Six Cylinder, Charge-Air Cooled Diesel Engine. Enclosed. With Air Compressor  
**Displacement:** 549 Cu. In. (9,0 liters).  
**Lubrication:** Forced Circulation.  
**Air Cleaner:** Dry Type.  
**Fuel Tank:** 269 U.S. Gals. (1018 liters).  
**Full Load Operating Time:** 16.8 Hrs.  
**Starter:** 12V Electric.  
**Standard Features:** Muffler w/Guard and Weather Cap, DOC/DPF and SCR Exhaust After-Treatment System.  
**Engine Control Features:** Padlockable Box with Throttle Control, Tachometer, Coolant Temperature, Oil Pressure, Voltage and Overstart Indicators/Shut-downs. Manual/Stop/Auto Keyswitch. Audible Startup Warning Delay. Fuel Level Display/Alarm/Shutdown Electronic Fuel Level Sensor.

**JOHN DEERE PUBLISHED PERFORMANCE:**

Maximum Gross BHP (Intermittent)  
400 (298 kW) @ 2000 RPM



GORMAN-RUPP PUMPS

www.grpumps.com

Specifications Subject to Change Without Notice

Printed in U.S.A.

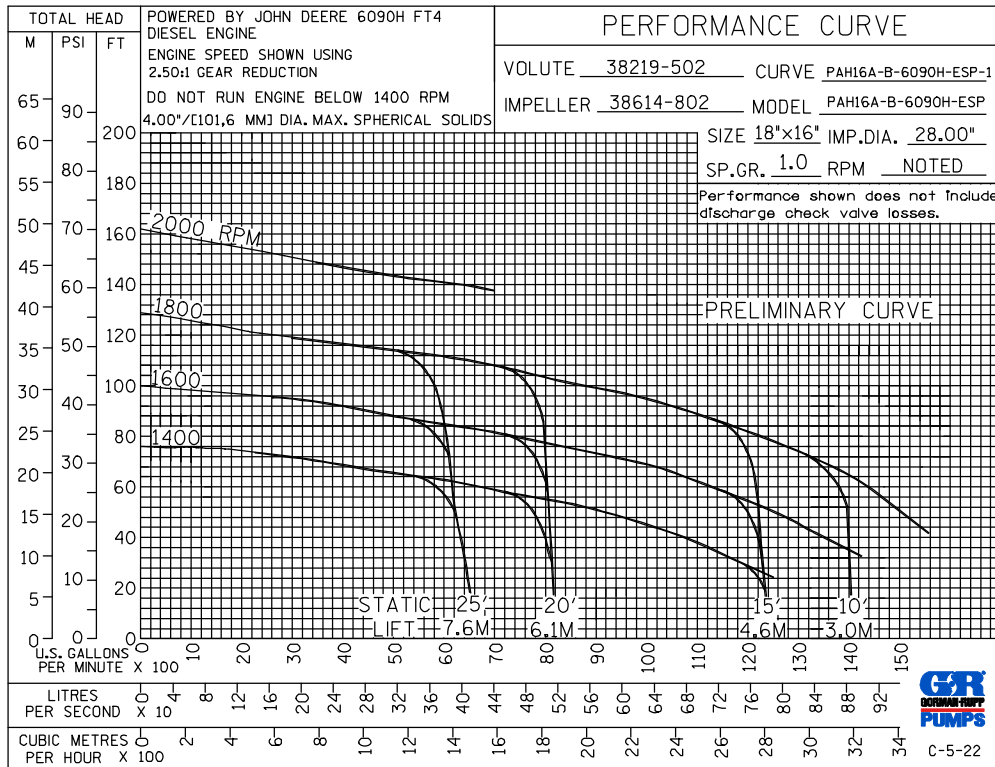
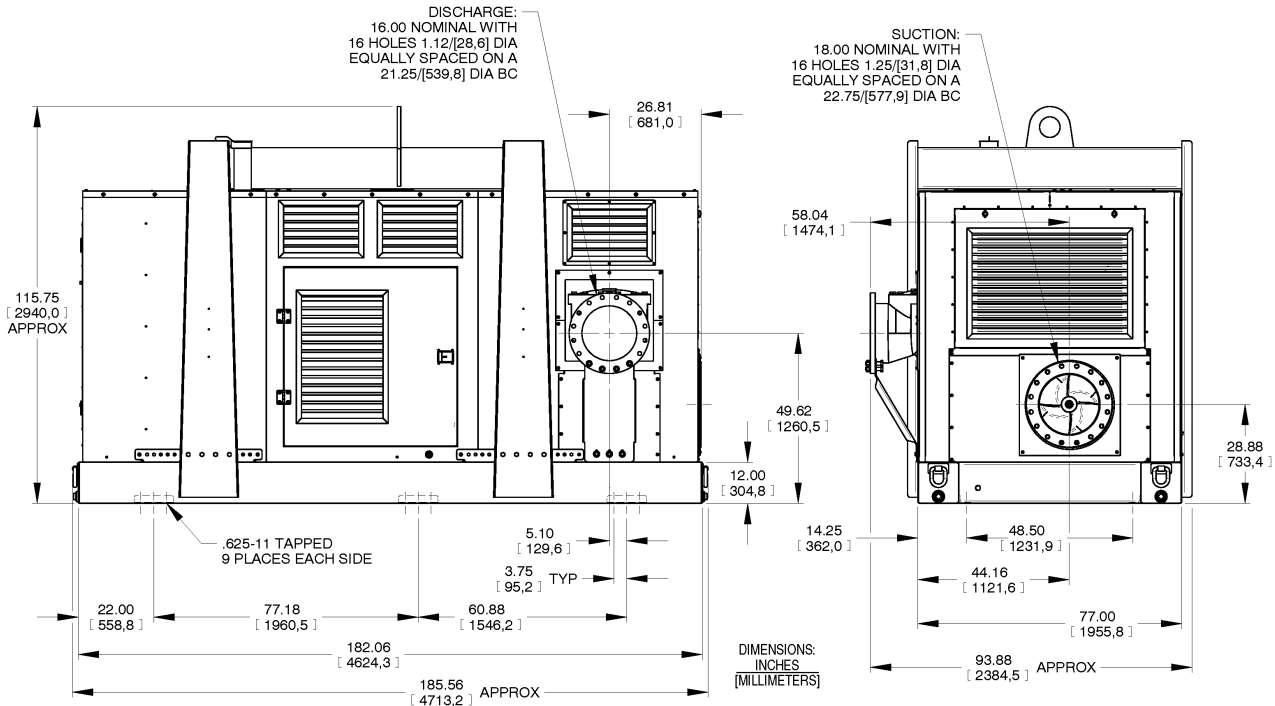
**Specification Data**

**SECTION, 43 PAGE –**

APPROXIMATE  
DIMENSIONS and  
WEIGHTS

**NET WEIGHT:**  
**SHIPPING WEIGHT:**  
**EXPORT CRATE SIZE:**

**18800 LBS. (7393,6 KG.)**  
**19500 LBS. (7711,1 KG.)**  
**1209 CU. FT. (34,2 CU. M.)**



**GORMAN-RUPP PUMPS**

www.grpumps.com

Specifications Subject to Change Without Notice

Printed in U.S.A.